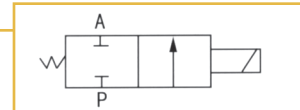


UW (Large Aperture) Series Two-position Two-way Direct Drive Type Solenoid Valve



Images show lead wire coil (optional)
DIN Connector coils are standard (form A connector)



N	UW	160	15	AC110V	V	
Thread	Valve Type	Orifice Code	Port Size	Coil Voltage	Seal Code	Type
N: NPT	UW: Brass	160: 16mm	10: 3/8"	DC12V	V: Viton	NO: Normally Open
<input type="checkbox"/> : G	US: Stainless Steel	200: 20mm	15: 1/2"	DC24V	<input type="checkbox"/> : NBR	<input type="checkbox"/> : Normally Closed
		250: 25mm	20: 3/4"	AC24V		
		350: 35mm	25: 1"	AC110V		
		400: 40mm	35: 1 1/4"	AC220V		
		500: 50mm	40: 1 1/2"	AC380V		
			50: 2"			

Specifications

Model	NUW160-10	NUW160-15	NUW200-20	NUW250-25	NUW350-35	NUW400-40	NUW500-50
	NUS160-10	NUS160-15	NUS200-20	NUS250-25	NUS350-35	NUS400-40	NUS500-50
Working Medium	Air, Water, Oil						
Motion Pattern	Direct Drive Type						
Type	Normally Closed or Normally Open						
Orifice (mm)	16	20	25	35	40	50	
CV	4.8	7.6	12	24	29	48	
Port Size	3/8"	1/2"	3/4"	1"	1 1/4"	1 1/2"	2"
Fluid Viscosity	<20						
Working Pressure	Air: 0-100psi(g)		Water: 0-75psi(g)		Oil: 0-75psi(g)		
Max. Supply Pressure	150psi(g)						
Operating Temp.	-5°C to 80°C / 23°F to 180°F						
Voltage Range	± 10%						
Material of body	NUW: Brass			NUS: Stainless Steel			
Seal Material	NBR or VITON						